

# Disability Support Program

The Disability Support Program provides support to children, youth, and adults with disabilities through a range of community-based, residential and day programs.

Many of our supports and services are delivered by non-DCS organizations – either not for profit, or for-profit.

## Direct Family Support for Children (DFSC)

Provides funding to enable families to support children with disabilities at home. DFSC funding is provided for the purchase of respite services to assist with scheduled breaks for family care givers.

## Small Options Homes

Provides residential support for four or fewer adults with disabilities.



## Independent Living Support (ILS)

Community-based option for eligible DSP participants requiring some support to live on their own. Support and services to individuals who live in their own apartment or home and require a minimal level of support (up to thirty-one hours per week). This service is offered by a Service Provider.

## Group Homes/ Developmental Residences

Provide participants with residential living support, learning and assistance with their activities of daily living, routine home and community activities. Focuses on enhancing a participant's skill development.

## Day Programming

Structured pre-vocational and vocational day programs for adults with disabilities using meaningful work as the vehicle for development in personal, social, vocational and employment skills and development. Some day programs may also offer recreational and leisure activities.

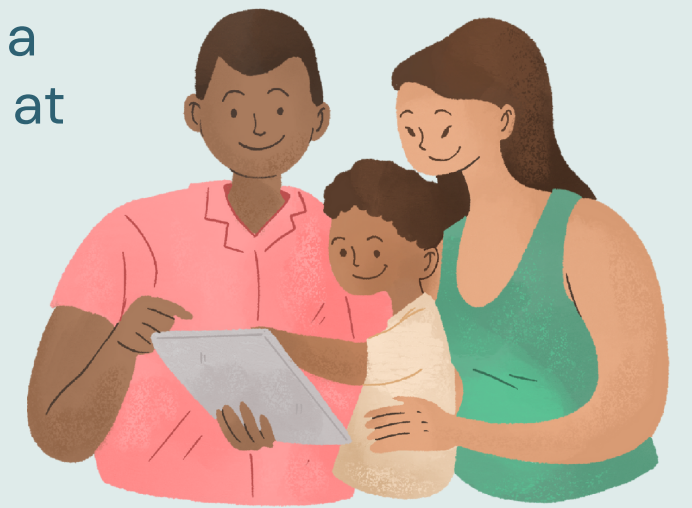


## Flex In Home

Financial assistance and support to eligible families who care for a family member with a disability at home.

## Flex Independent

Financial assistance and support to eligible adults to live independently on their own.



*This program is self managed.*

## Alternative Family Support (AFS)

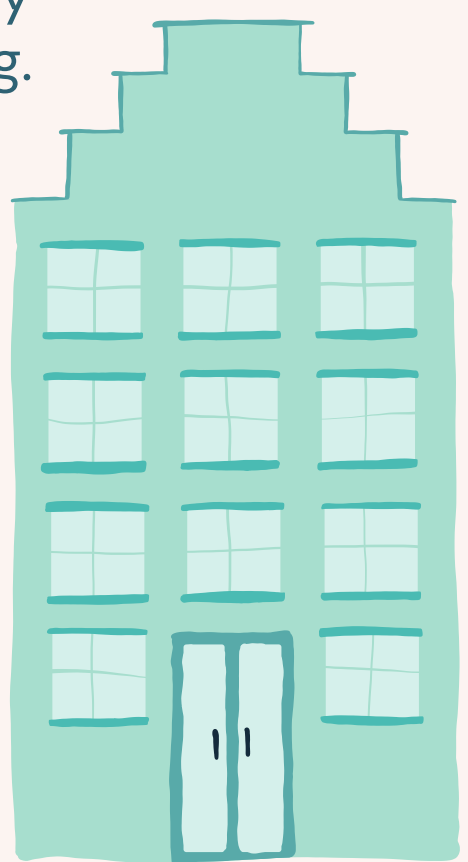
Home sharing opportunities with families for individuals who require varying levels of support and supervision. Participants may receive varying levels of support with activities of daily living, and routine home and community activities.

## Adult Residential Centres (ARC)

Long-term structured supports and services for individuals with disabilities to enhance their development of interpersonal, community-oriented skills, and activities of daily living.

## Regional Rehabilitation Centres (RRC)

Individuals with disabilities who require an intensive level of support and supervision related to complex behavioural challenges and skill development needs.



## Residential Care Facilities

Four or more individuals who require minimal support and supervision with routine personal-care activities, community skills and activities, and illness supervision.